



Fitting Instructions

TOWBAR SK9A
For SKODA OCTAVIA
HATCH / ESTATE

MATERIALS

A	1	Cross Tube
C	1	Centre Tube with European facing to 94/20/EC A50-1
D	4	M10 x 30mm Bolts, Lock Washers and Large Flat Washers (30mm O.D.)
D1	2	Left & Right Sidearms
E	4	M12 x 30mm Bolts, Nuts, Lock Washers and Flat Washers (25mm O.D.)
F	2	M12 x 75mm Bolts and Nyloc Nuts
CB	2	M16 x 50mm Coupling Bolts, Nuts and Lock Washers
Z	1	ZEP35 Electrical plate (not shown)

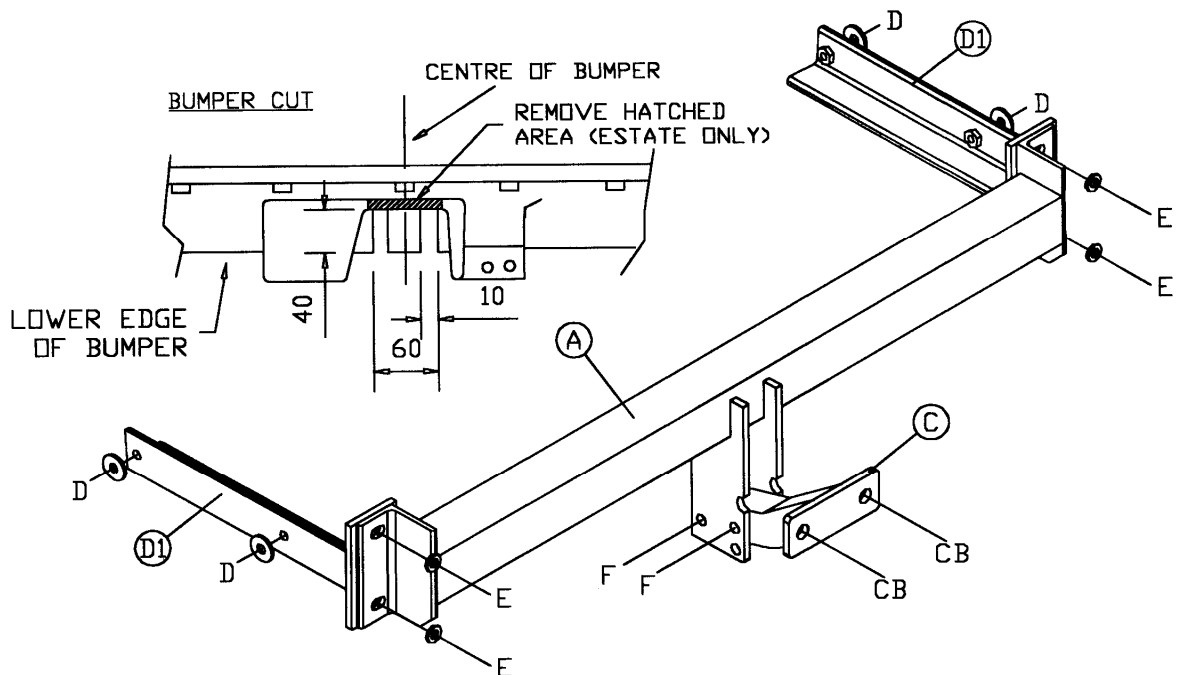
FITTING

1. Remove bumper (HATCH ONLY- 5 Torx head screws along lower edge, 4 beneath trim on top edge of bumper, 1 small screw securing each light cluster trim panel - slide panels inwards and remove to reveal 1 Torx head screw and finally remove 2 M6 bolts inside the boot behind each side panel - ESTATE ONLY- 2 bolts and 1 nut behind rear trim side panels, remove mud flaps and tip screws, remove torx head screws around lower edge of bumper).
2. Remove bumper cross beam from vehicle and discard (or retain for fitment when bracket is removed), Position Sidearms (D1) inside chassis and very loosely secure using Bolts (D) at existing holes (covered in tape) with Large Flat Washers, secure Cross Tube (A) to Sidearms (D1) using Bolts (E) with Flat Washers. Tighten all bolts ensuring Cross Tube (A) is positioned as close to the rear panel as possible.
3. Cut two 10mm wide x 40mm long slots in bumper as shown below and refit bumper.
4. Attach Centre Tube (C) to Cross Tube (A) using Bolts (F) and fully tighten bolts.

This towbar must be used with either a Witter Towball (part number Z1) or Class A50-1 or A50-X towball dimensionally Conforming to A50-1 with a 'D' and 'S' value greater than or equal to that of the towbar.

Please refer to the vehicle specification for the trailer weight and nose limits, which **must be observed**.

Recommended torque settings: M8 - 27Nm, M10 - 53 Nm, M12 - 95 Nm , M14 - 150 Nm, M16 - 214 Nm



W0001SK9A-FIT\$010802220000