

ISSUE:	DRAWN BY:	CHECKED BY:	CRF NO:	DATE:	DESCRIPTION:
f			0740		
g	JW	DG	0740	17/07/13	
h	CH	KB	1047	22/04/15	Roller axle changed to TP031
i	CH	KB	1130	11/09/15	FS015 changed to FS075 to improve fit

PA26 x 1  
8" x 10" Polythene Bag, 250G

LA021 x 1  
Printed Label, Kit Box

LA074 x 2  
Clear Adhesive Label

(INFK117) x 1  
Customer Instruction Sheet(s)

FB005 x 4  
M6 x 60mm st/st A2 Hex Head Bolt

FW001 x 8  
M6 st/st A2 std Washer

FN001 x 4  
M6 st/st A4 Nyloc Nut

FS075 x 2  
M8 x 20mm Hex Head Screw, BZP

FW009 x 2  
M8 Shake Proof Washer, A2 st/st

TP031 x 2  
Snap Fit Roller Insert, Blind Hole

FN011 x 4  
M10 st/st A2 Half Nut

FW005 x 4  
M10 Shake Proof Washer

PS135 x 2  
Roller Support Pad, 75mm

DRAWING NO: FK117 (1of3)	DESCRIPTION: Delta Bar Rear Roller Fitting Kit		DESIGNED BY: K. Broadbent 07/08/12
MATERIAL SIZE: n/a	MATERIAL SPEC: n/a	FINISH: n/a	WEIGHT: 0.35Kg
© NOTE: This drawing is the property of Rhino Products Ltd and must not be used or copied without written consent. The Rhino Products name and logo must remain clearly visible in any reproduction.			

THIRD ANGLE PROJECTION

UNLESS OTHERWISE SPECIFIED:  
DIMENSIONS ARE IN MM

0.00 ±0.2  
0.0 ±0.5  
ANG ±0.5°

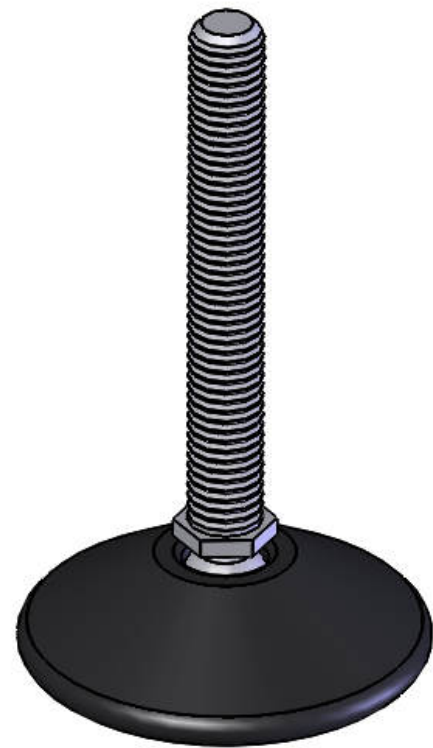
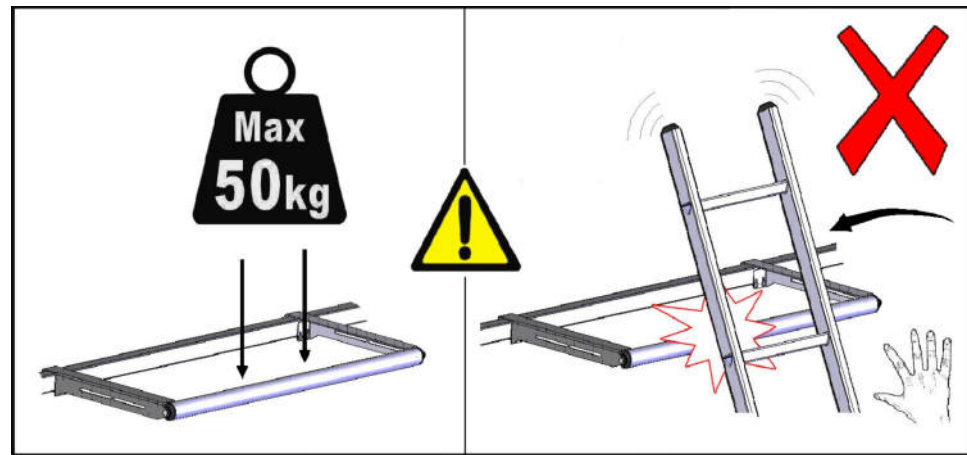
DERIVED DIMENSIONS SHOWN IN BRACKETS

DEBURR AND BREAK  
ALL SHARP EDGES

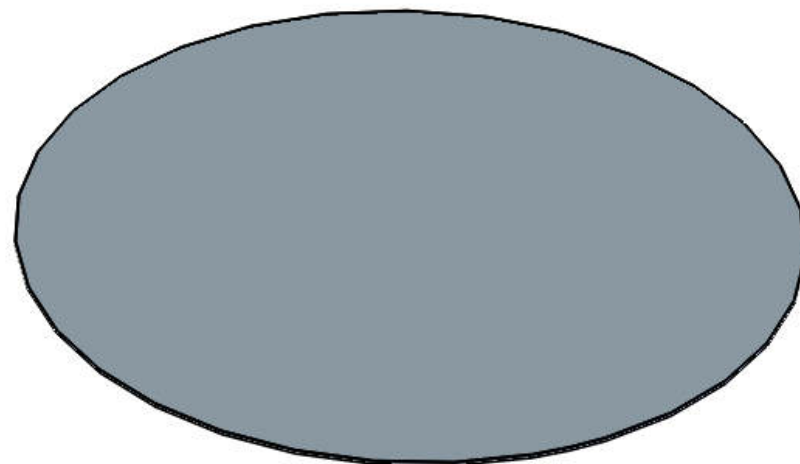
SHEET SIZE A3

SHEET SCALE: 1:2

Frm No:076    Revision: B    Date: 29/10/14



(PS135) x 2

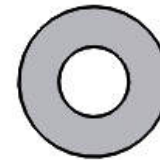


LA074 x 2

(1:1)



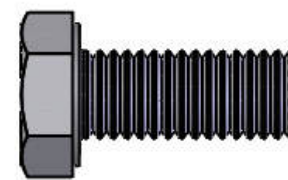
FB005 (M8) x 4



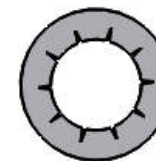
FW001 (M6) x 8



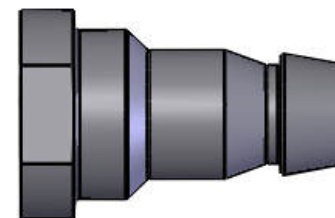
FN001 (M6) x 4



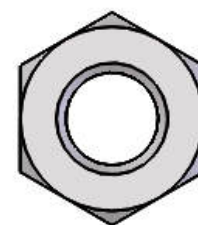
FS075 (M8 x 20) x 2



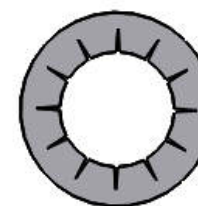
FW009 (M8) x 2



TP031 (M8) x 2



FN011 (M10) x 4



FW005 (M10) x 4

