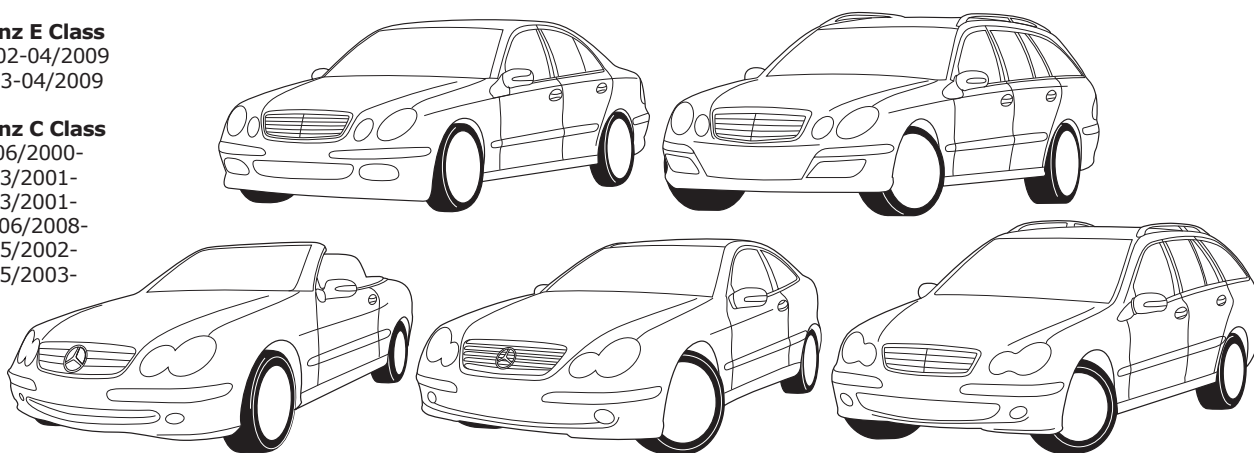


Mercedes Benz E Class

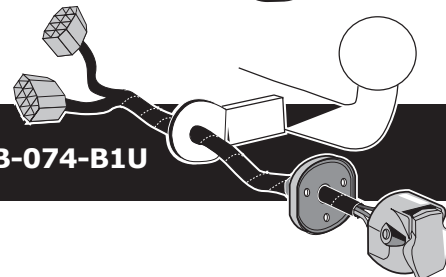
W211 03/2002-04/2009
S211 03/2003-04/2009

Mercedes Benz C Class

Class W203 06/2000-
Class C203 03/2001-
Class S203 03/2001-
Class CL203 06/2008-
Class C209 05/2002-
Class A209 05/2003-



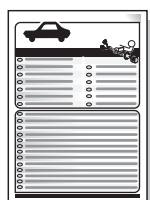
Partnr.: MB-074-B1U



- Fitting instructions electric wiring kit tow bar with 12-N socket up to DIN/ISO Norm 1724.
- We would expressly point out that assembly not carried out properly by a competent installer will result in cancellation of any right to damage compensation, in particular those arising by virtue of the product liability act.
- Contents of these kits and their fitting manuals are subject to alteration without notice, please ensure that these instructions are read and fully understood before commencing installation.
- Do not overload circuits; the maximum loads per connection are detailed in this manual.
- Attention! Before Installation, please read this manual carefully and inform your customer to consult the vehicle owners manual to check for any vehicle modifications required before towing.
- In the event of functional problems, troubleshooting must be limited to about 0.5 hours, contact the technical support:
t.skinner@ecs-electronics.com / 07440 202 052.



Part list



G



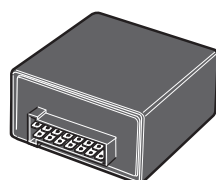
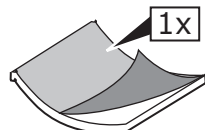
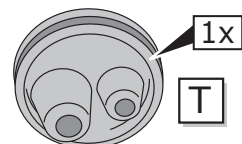
L2



M



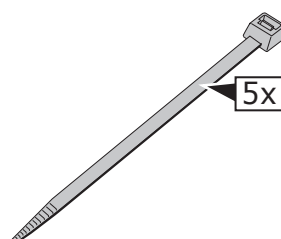
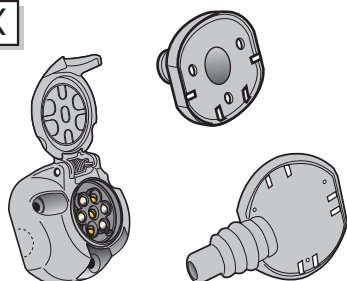
L1



M



X

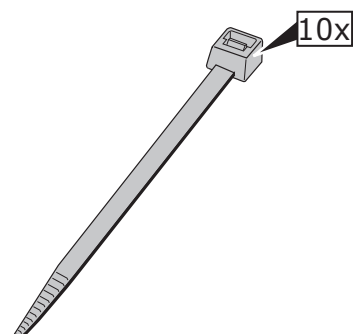
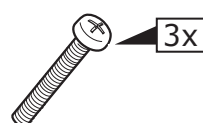
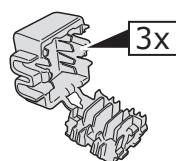
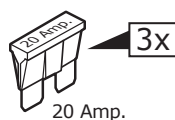


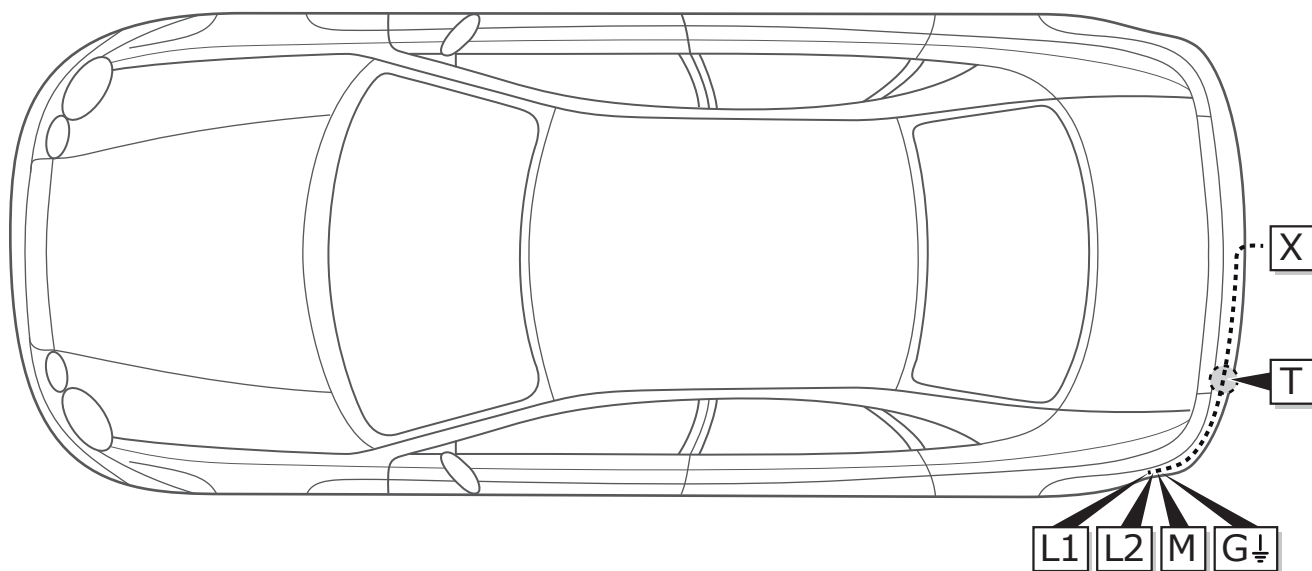
UN-243-YZ

Optional reverse lamp
pre-wire extension included

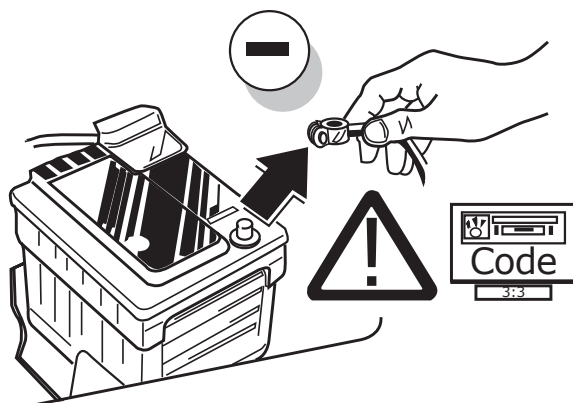


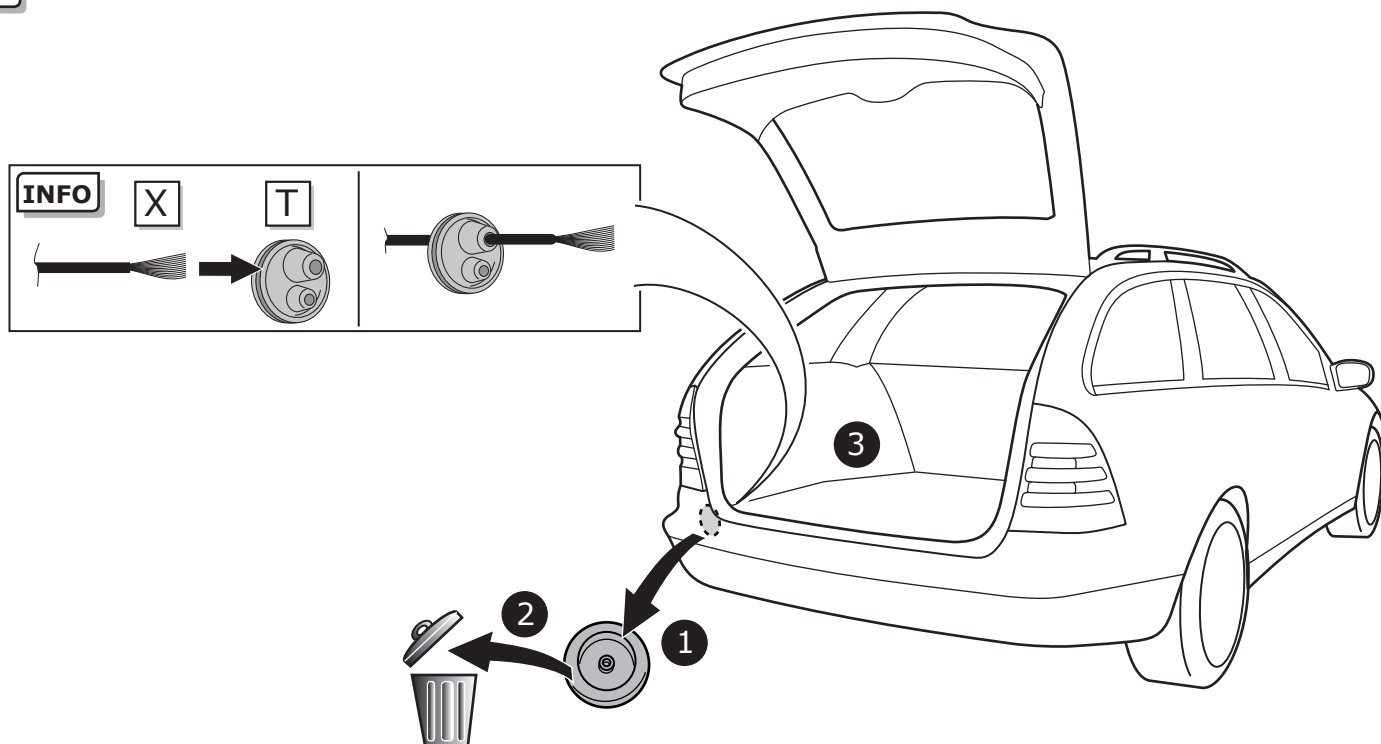
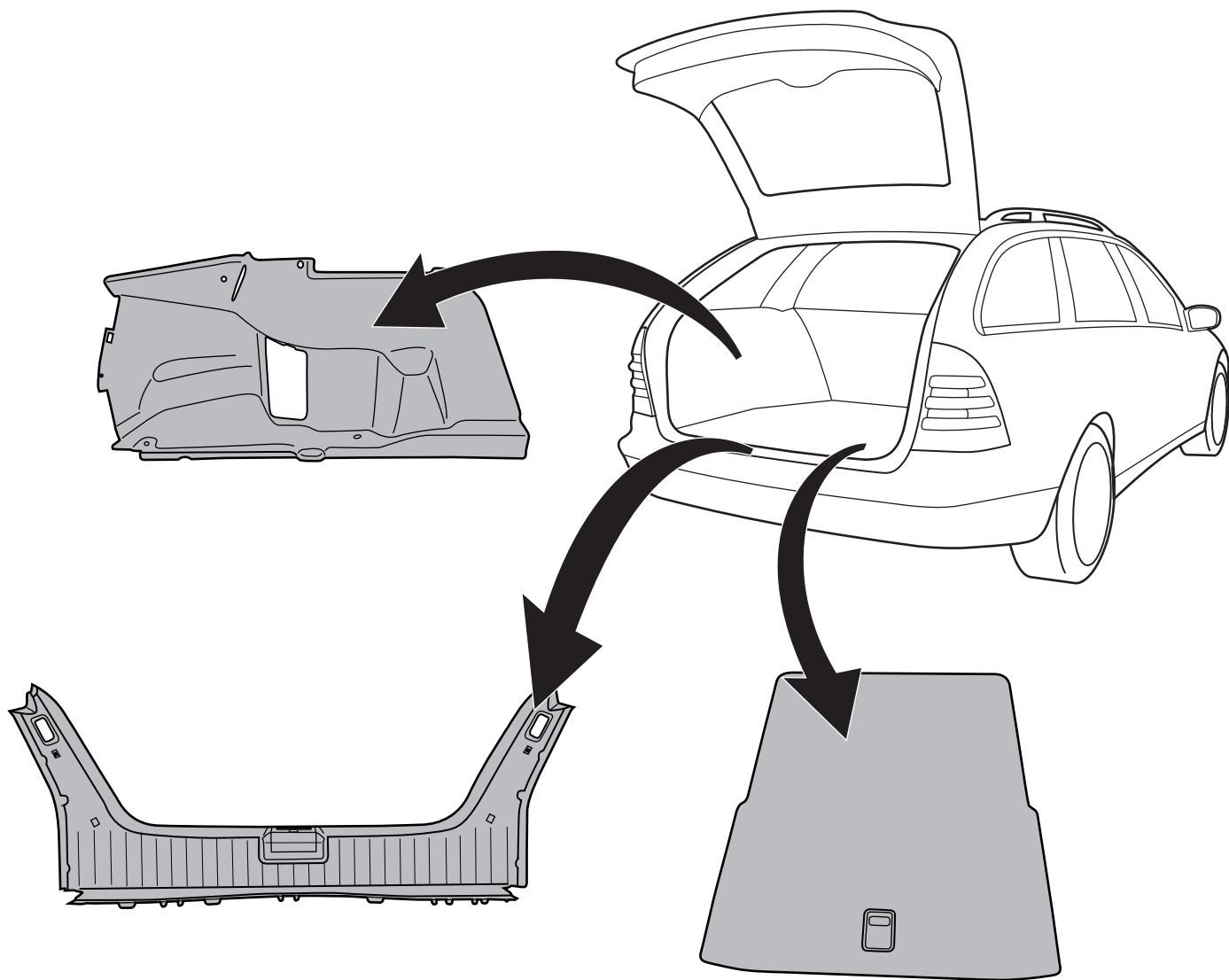
Pag. 10

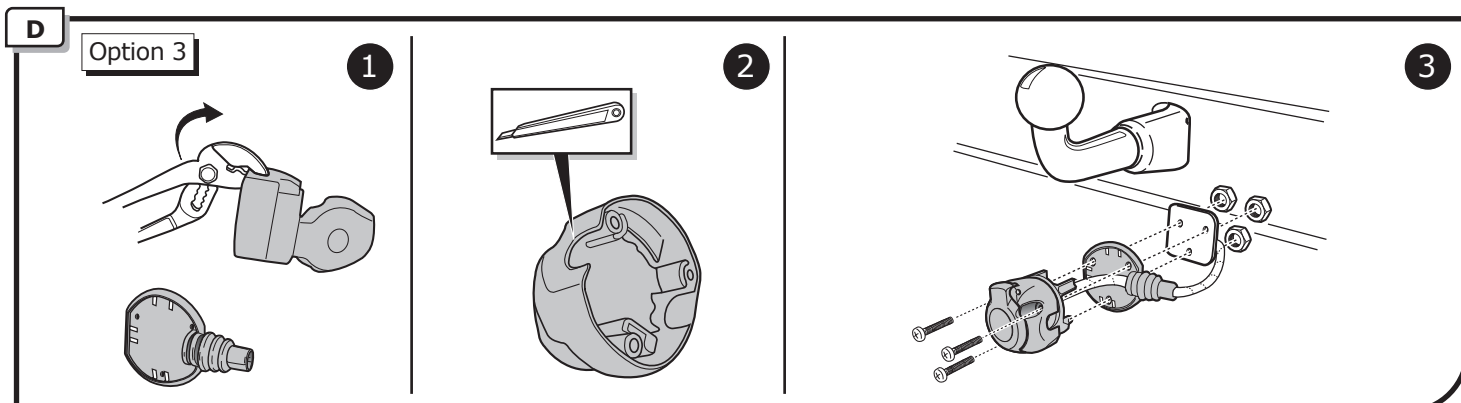
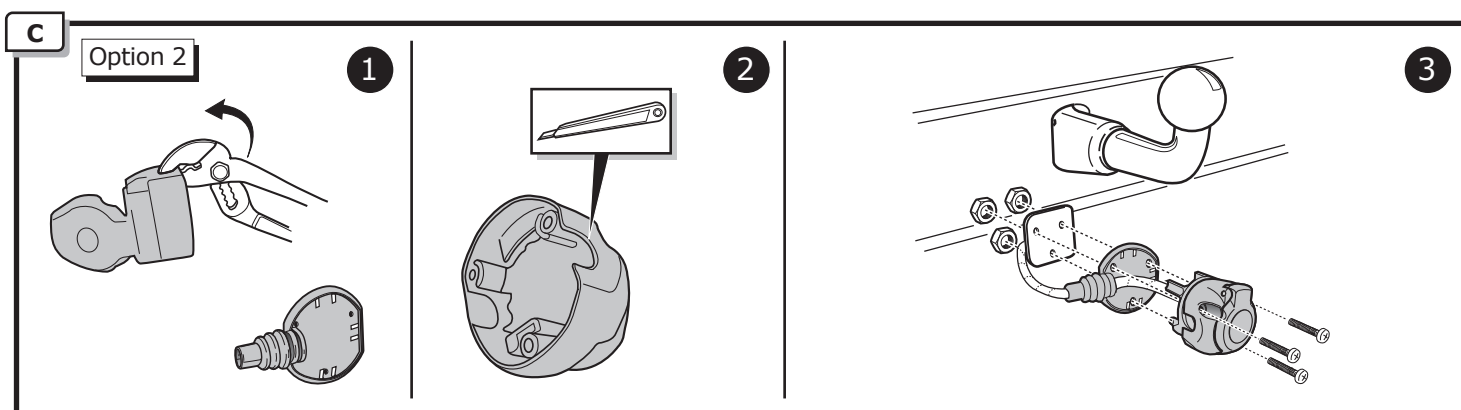
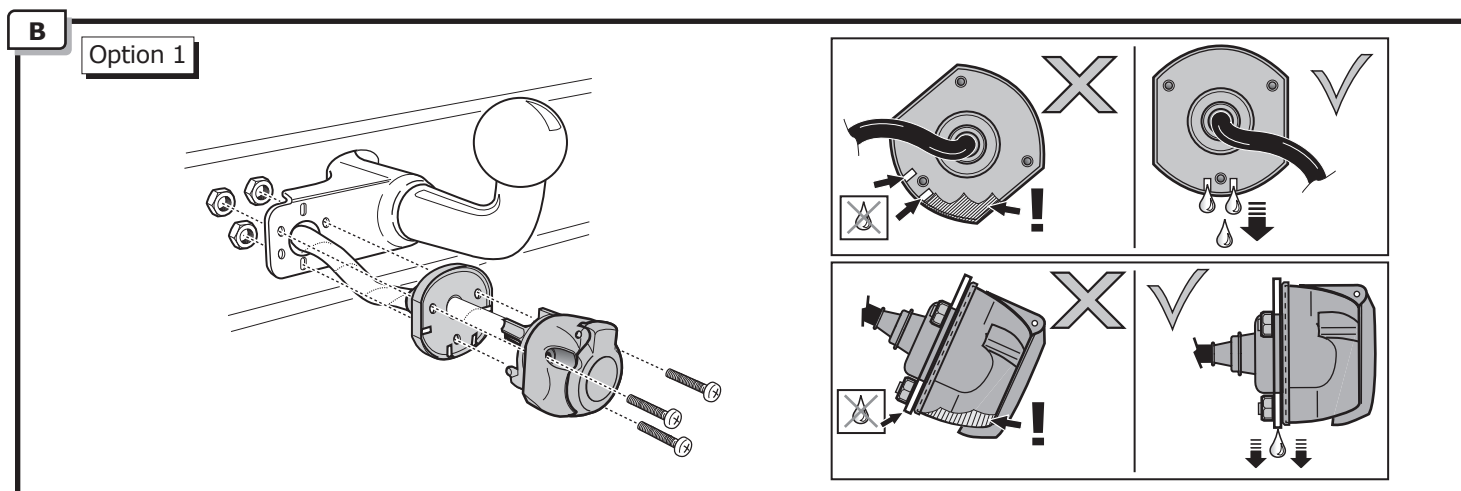
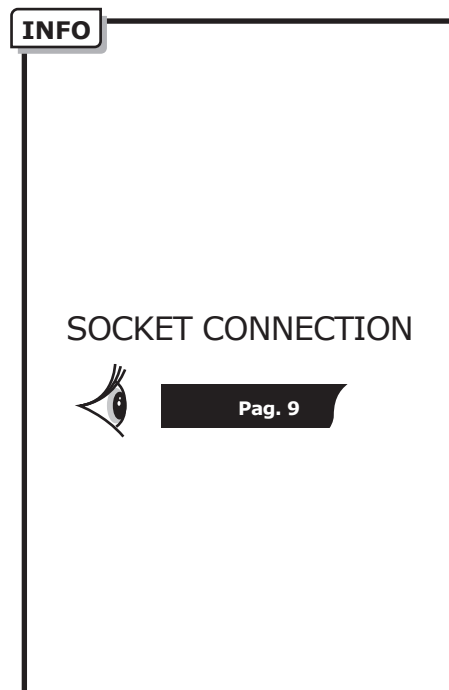
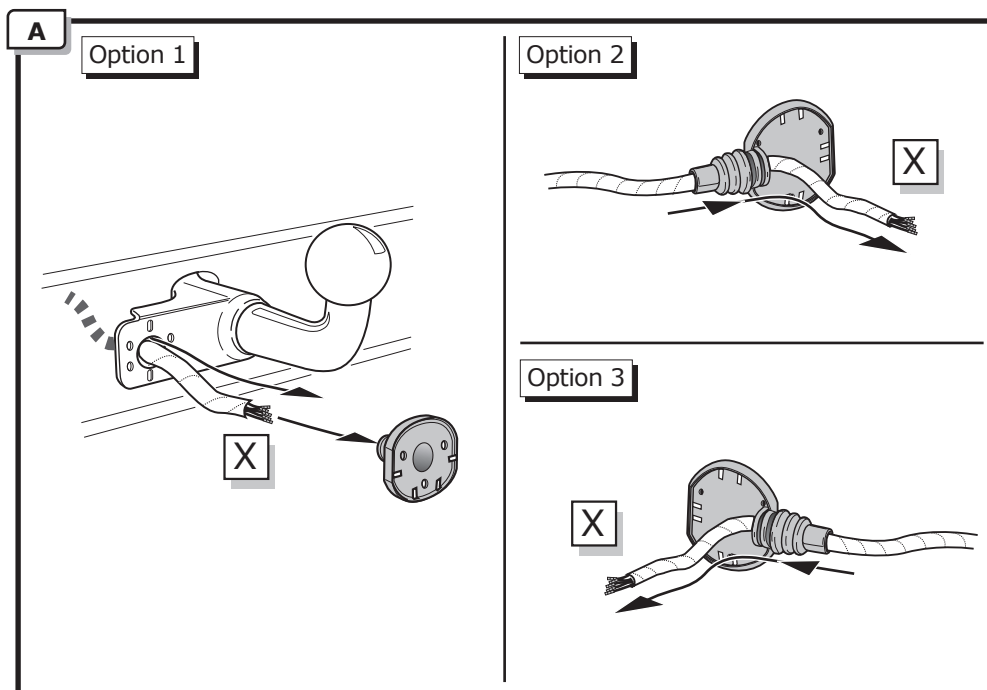




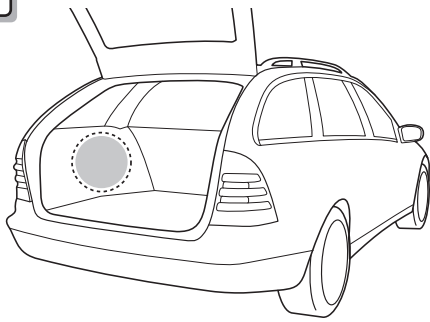
1



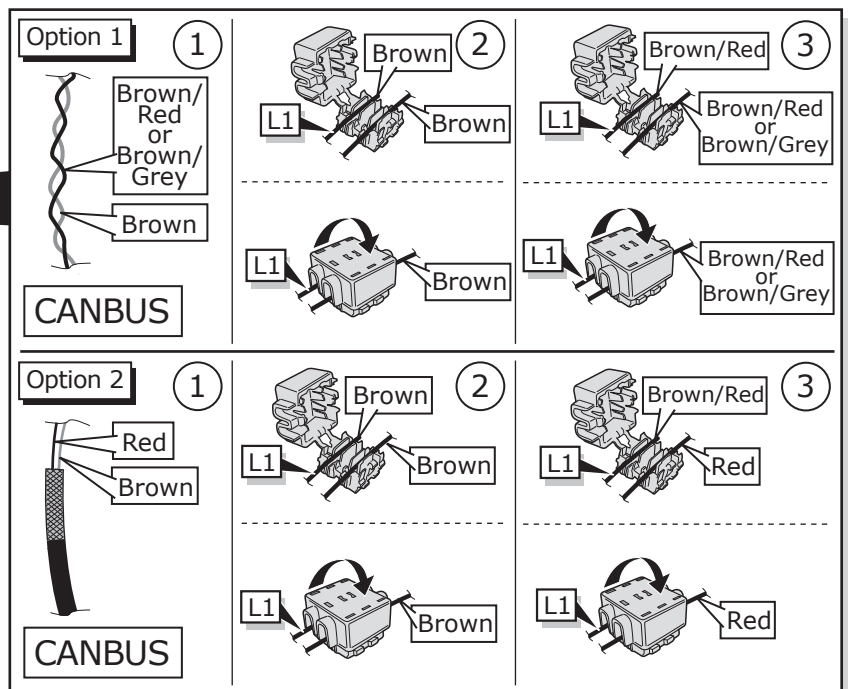
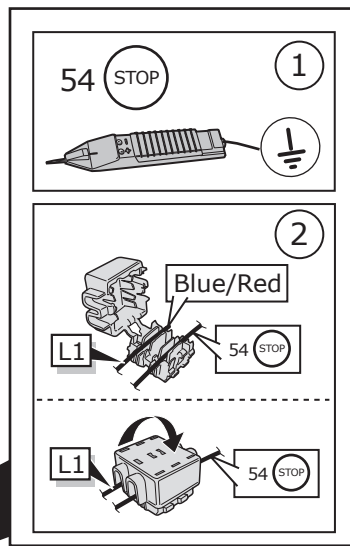
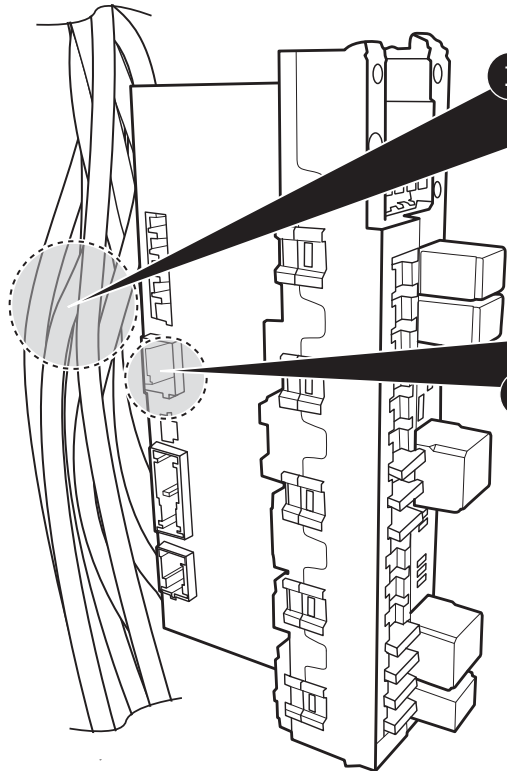




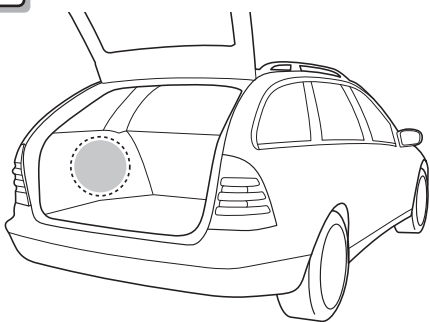
4



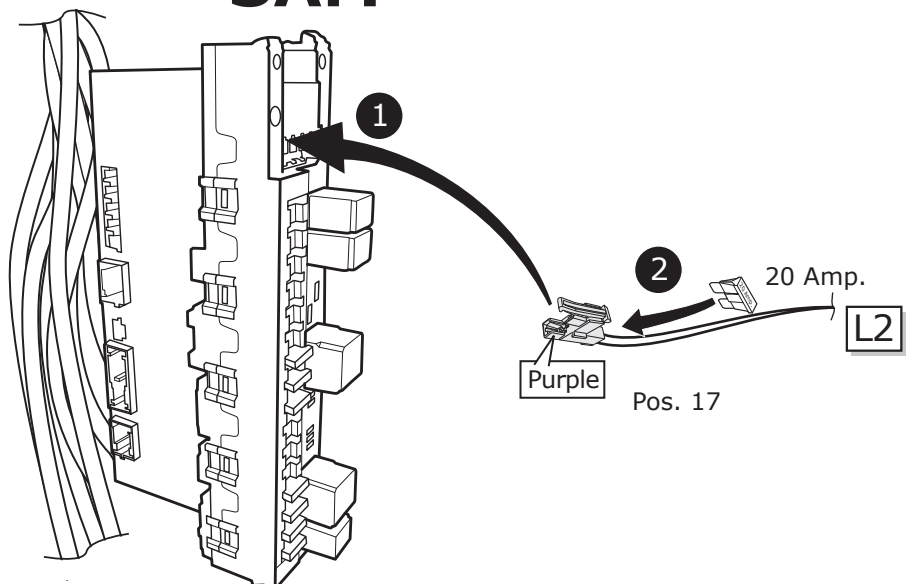
SAM



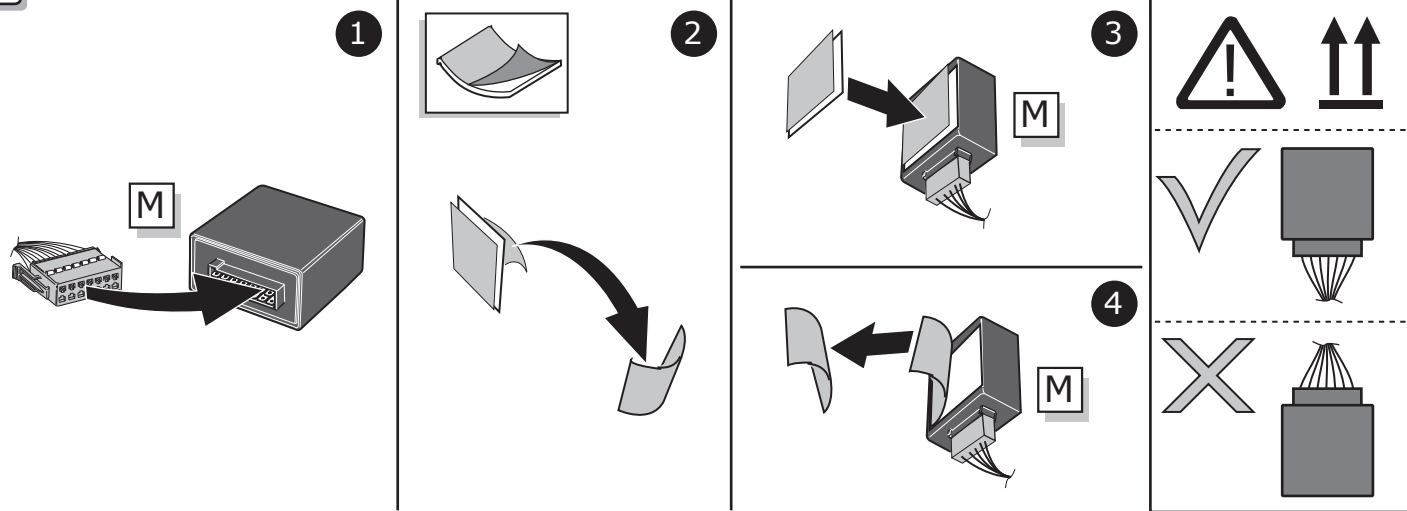
5



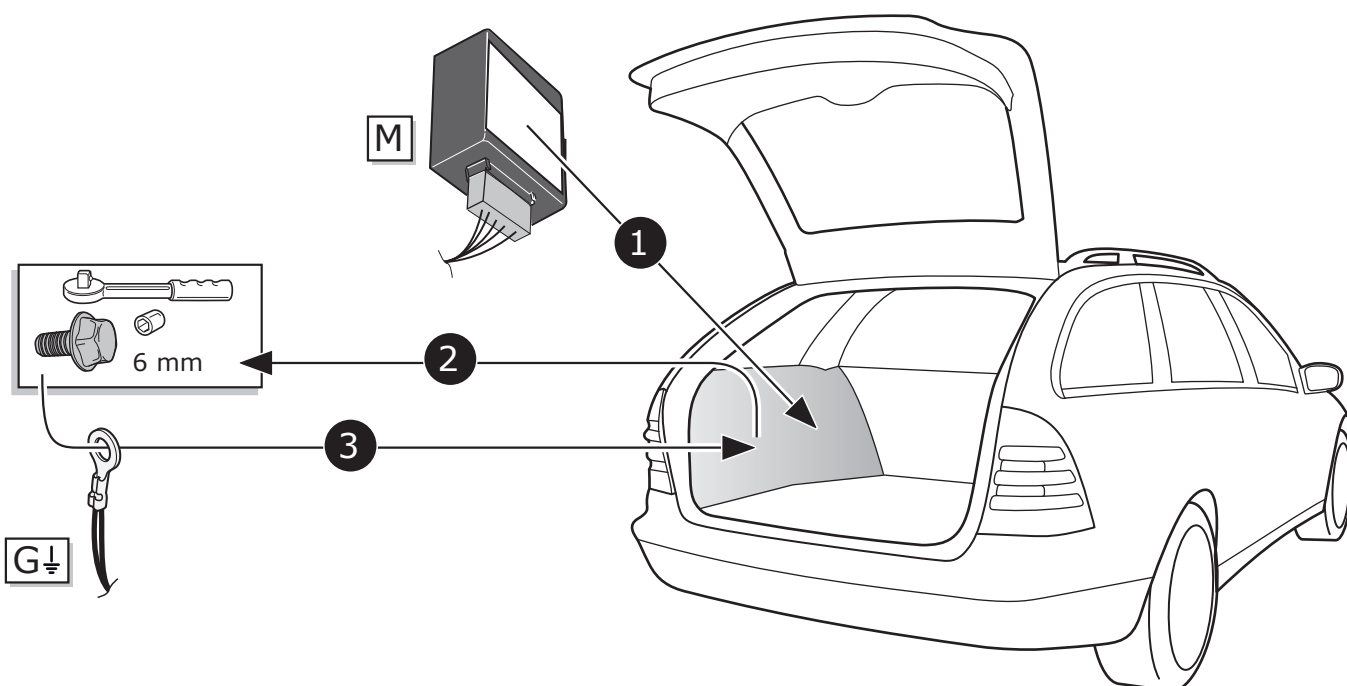
SAM



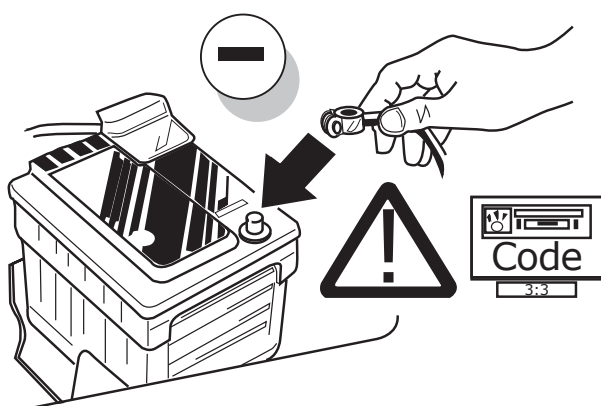
6



7

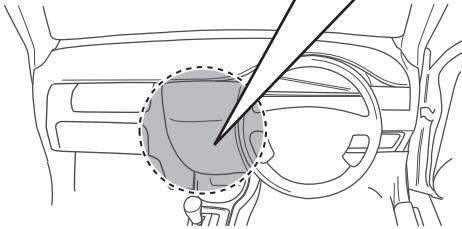
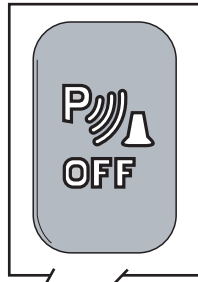
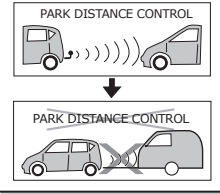


8

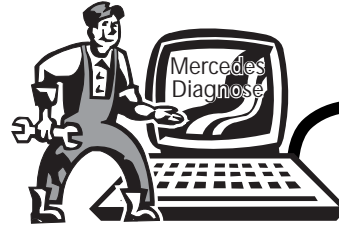
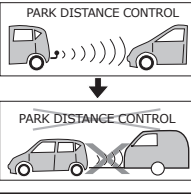


9

Option 1

Manual PDC

Option 2

Auto PDC

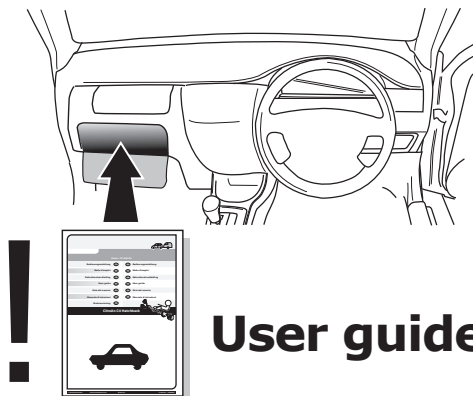
10

! TEST ALL THE CIRCUITS WITH A TEST DEVICE WITH THE CORRECT POWER LOAD FOR EACH FUNCTION. A TEST DEVICE WITH LED'S CANNOT BE USED FOR THIS PURPOSE.








INFO

REINSTALL TRIM.

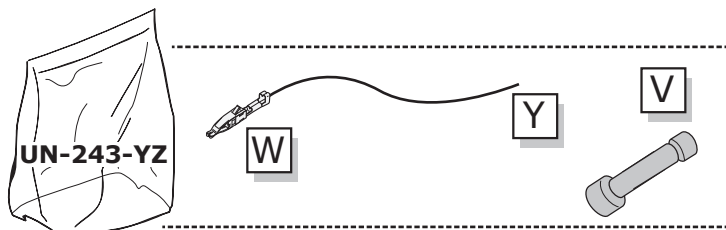
11



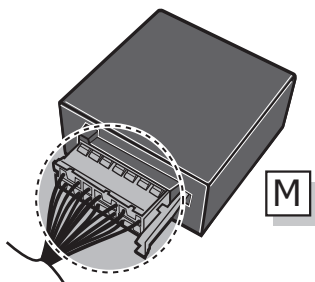
SOCKET CONNECTION

DIN/ISO 1724			 1-7				
	1/L	2	3/31	4/R	5/58-R	6/54	7/58-L
Pmax	21W	21W		21W	42W	3x21W	42W
Colour	Yellow	Blue	White	Green	Brown	Red	Black

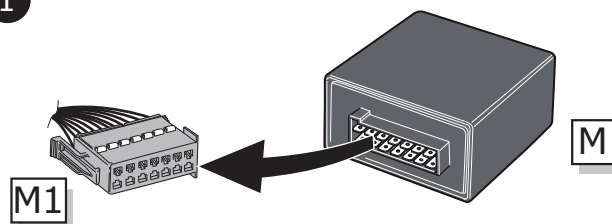
⚠ MAX = 21W



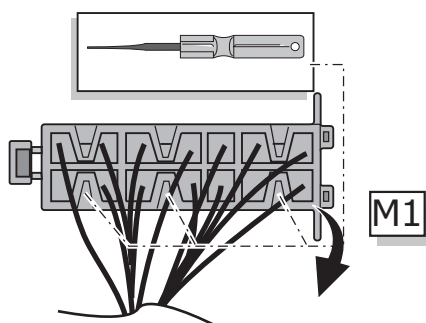
A



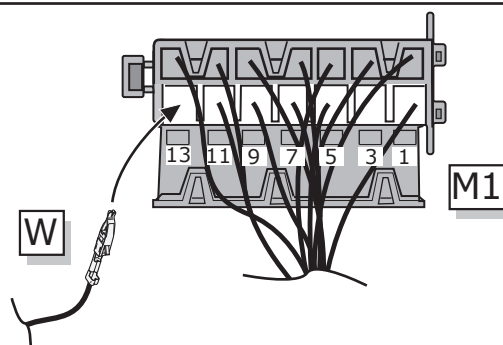
1



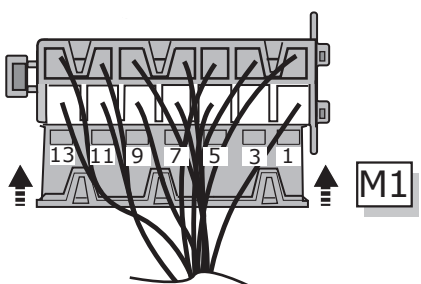
2



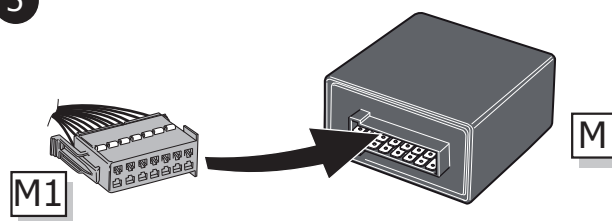
3



4



5



B

⚠ MAX = 21W

