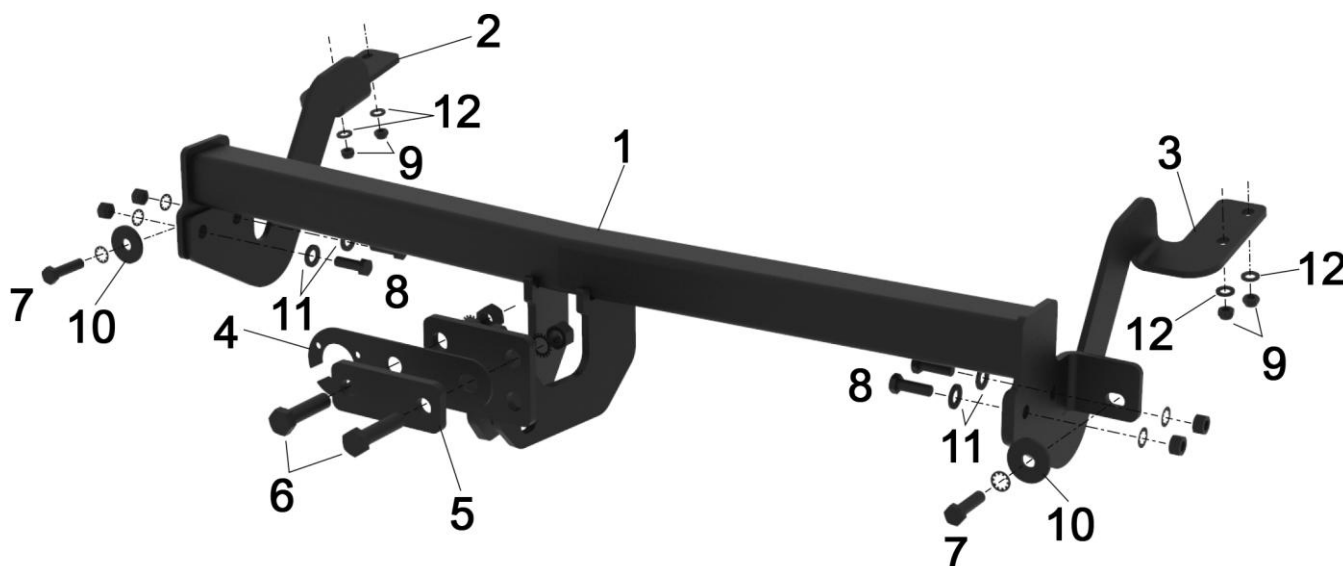


### Parts List:

Part No:	Description:	Size:	Torque	Qty:
1	Crossbar			1
2	L/H Sidearm			1
3	R/H Sidearm			1
4	Electrics Plate			1
5	Coupling Packer			1
6	Bolt + Lock Washer + Nut	M16 x 55	214Nm	2
7	Bolt + Lock Washer	M12 x 45	95Nm	2
8	Bolt + Lock Washer + Nut	M12 x 35	95Nm	4
9	Nyloc Nut	M10	53Nm	4
10	Washer (30mm O.D x 5mm)	M12	95Nm	2
11	Washer (23mm O.D x 2mm)	M12	95Nm	4
12	Washer (21mm O.D x 1.6mm)	M10	53Nm	4



### Fitting:

#### Fitting:

1. Remove spare wheel & temporarily remove the hook from its thread.
2. Remove bumpers lower edge fixings.
3. Remove the bracket and 2 nuts from each chassis rail if present.
4. Remove the bottom bolt connecting the crash beam to the rear panel on each side.
5. Insert Crossbar (1) into the bumper cavity and attach, but do not secure, it to the existing holes using bolts (7) with Washer (10) under bolt head.
6. Position Sidearms (2) & (3) over the existing studs on the lower side of the chassis rail and attach, but do not secure, using washers (12) & Nuts (9). Sidearm (3) will require positioning above the exhaust mount.
7. Attach, but do not secure, Sidearms (2) & (3) to Crossbar (1) using bolts (8) with washer (11) cover the large holes on Sidearms (2) & (3).
8. Tighten all bolts to the recommended torque values (See table above).
9. Re-fit spare wheel and bumper fixings.

**Note:** This towbar must be used with a Class A50-1 or A50-X towball, which dimensionally conforms to A50-1 with a 'D' & 'S' value greater than or equal to that of the towbar.

**\*\*Manufacturers towing limits must be observed for towing capacity\*\***