



Fitting Instructions

TOWBAR TY138Q
For Toyota Corolla T2 & T3
3 and 5 door Hatchback (2002 -)

MATERIALS

A	1	Cross Bar
C	1	Side Arm left hand
D	1	Side Arm right hand
E	4	M12 x 30mm x 1.75 Bolts, Nuts and Lock Washers
F	2	Captive Bolts
G	4	M12 x 30mm x 1.25 Bolts (Fine), Flat Washers (30mm OD) and Lock Washers
H	2	M12 x 1.75 Nuts, Flat Washers (30mm OD) and Lock Washers
EP	1	Electrical Plate (ZEP2)
ZQ	1	Detachable Kit (ZQ2031)

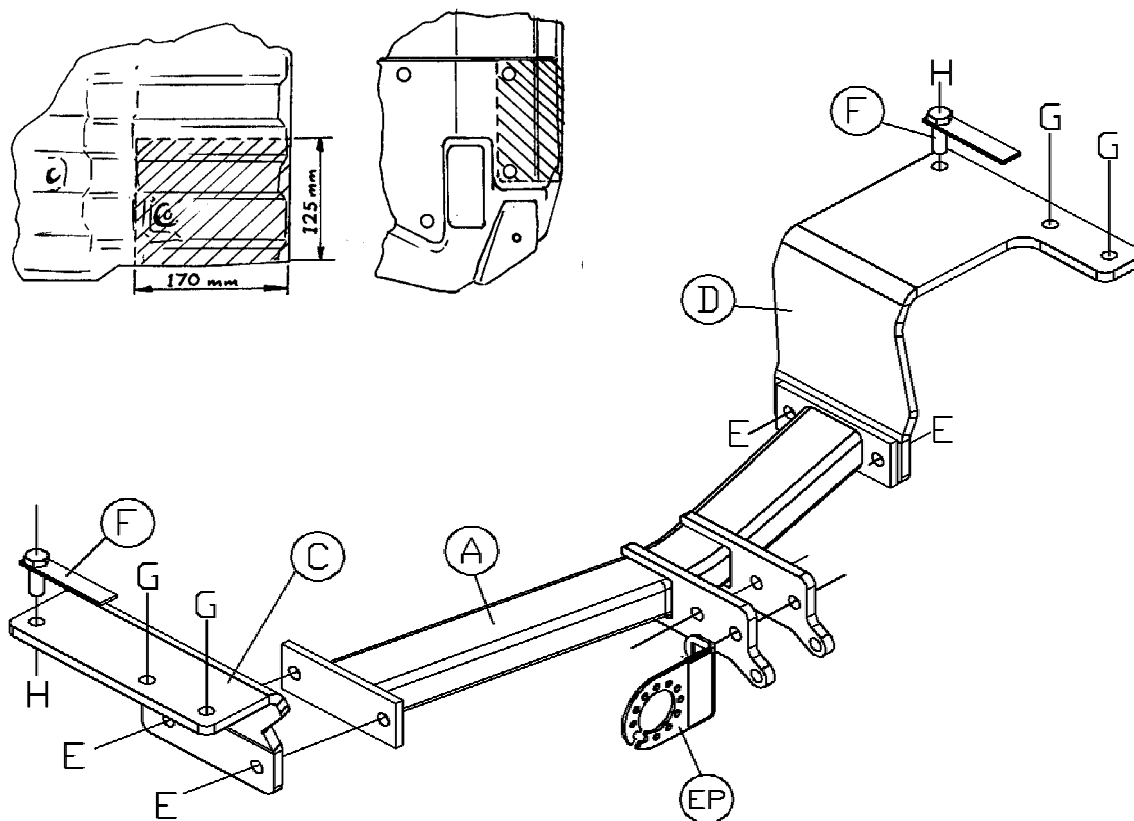
FITTING

1. Remove the plastic under tray and towing eye on the left hand side, retaining the towing eye and trimming the under tray as shown.
2. Lower the rearmost exhaust silencer, remove the heat shield and trim as shown.
3. Insert Captive Bolts (F) into the chassis through the large existing access hole, if necessary enlarge the access hole.
4. Loosely attach Side Arms (C) and (D) using Bolts (G) and Nuts (H).
5. Attach Cross Bar (A) to Side Arms (C and D) using Bolts (E).
6. Attach detachable neck (ZQ), and electrical plate (EP) as per separate fitting instruction.
7. Finally tighten all bolts and refit the plastic under tray, exhaust heat shield and exhaust.

Note: This towbar must be used with either a Witter Towball (part number Z1) or Class A50-1 or A50-X towball dimensionally Conforming to A50-1 with a 'D' and 'S' value greater than or equal to that of the towbar.

Please refer to the vehicle specification for the trailer weight and nose limits, which **must be observed**.

Recommended torque settings: M8 - 27Nm, M10 - 53 Nm, M12 - 95 Nm, M14 - 150 Nm, M16 - 214 Nm





Fitting Instructions

QUANTUM DETACHABLE TOWBALL SYSTEM (ZQ XXXX)

MATERIALS

A	1	Receptor/Socket for Towball
T	1	Detachable Towball
K	2	Keys for Detachable Towball
X	4	M12 x 25 x 1.75mm Bolts, Spring Washers and Flat Spacer Washers (25mm O.D)
FC	1	Fixed Weather Cover
RC	1	Removable Weather Cover
L	1	Centreline Label
B	1	Bag
ZQM1	1	Operation Manual

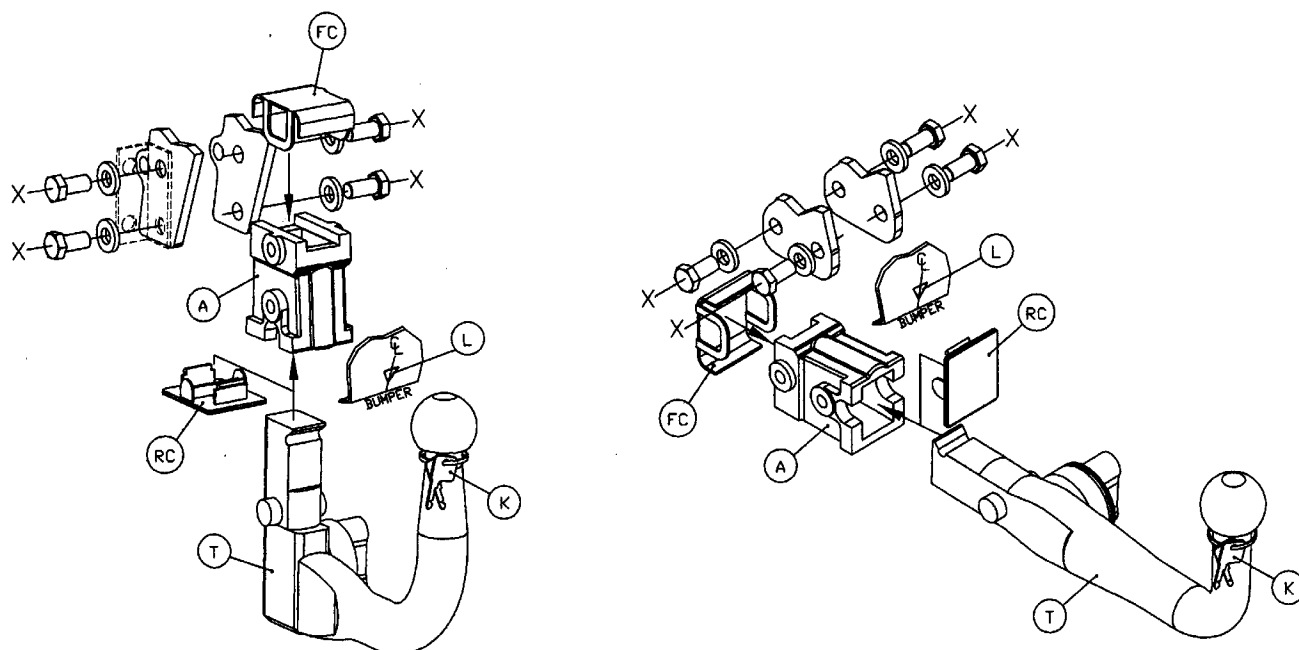
INSTALLATION PROCEDURE

1. Place black plastic fixed weather cap (FC) over forward/ (horizontal system) / upper (vertical system) holes of receptor/socket (A), insert receptor/socket (A) into gap between mounting plates on the towbar, and loosely attach using bolts (X).
 - Notes: (ZEQ1), which is provided as part of the towbar should be refitted on left hand side, together with the electrical socket mounting plate (ZEP1). Only use the 25mm O.D Flat Spacer Washers (X) where there are no loose components attached, i.e. ZEQ1 (electrical socket mounting plate bracket, shown in dashed linetype below).
2. Insert detachable towball unit (T), using procedure detailed in Operation Manual provided, and ensure correct vertical alignment of the towball before fully tightening bolts (X).
3. Attach centreline label (L) to lower edge of bumper.
4. Remove keys (K) from neck of towball, and record the key number in the Operation Manual, together with the fitters name, telephone number, date fitted, vehicle model and registration number and towbar part number.

Bumper Cut – It may be necessary to trim the bumper to allow adequate clearance around the operation handle on the right hand side.

Note: It is essential that the customer/end user is familiar with the operation of the towball system, as detailed in the operation manual, which must be handed to the customer/end user.

Recommended torque settings: M12 - 95 Nm



Important – It is essential to ensure that the Operation Manual is in the possession of the end user.